

İstanbul Radyosu

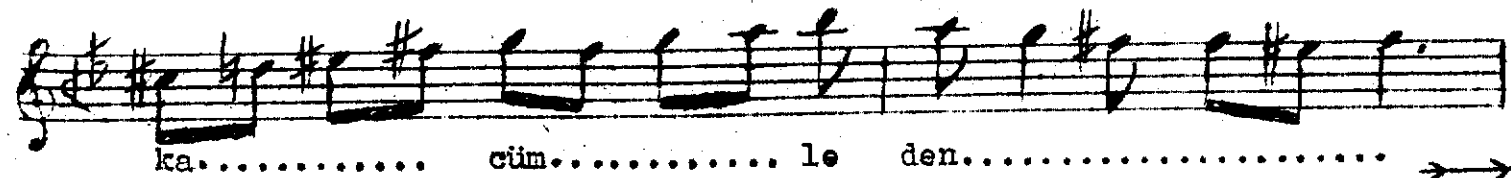
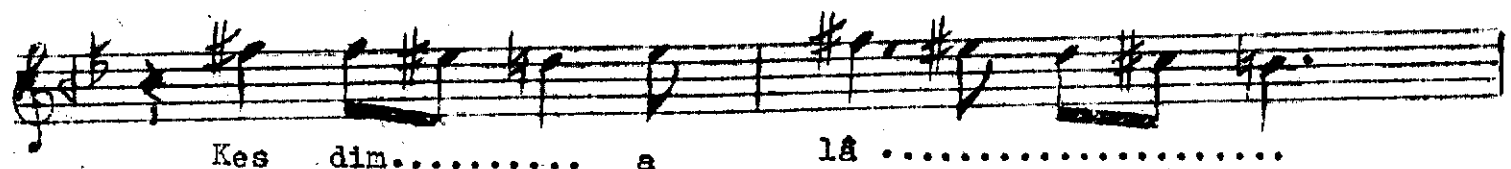
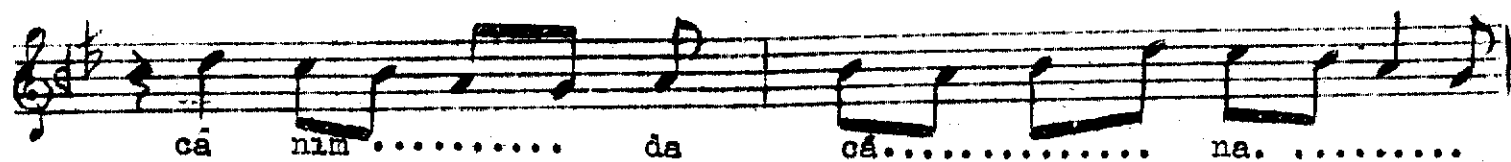
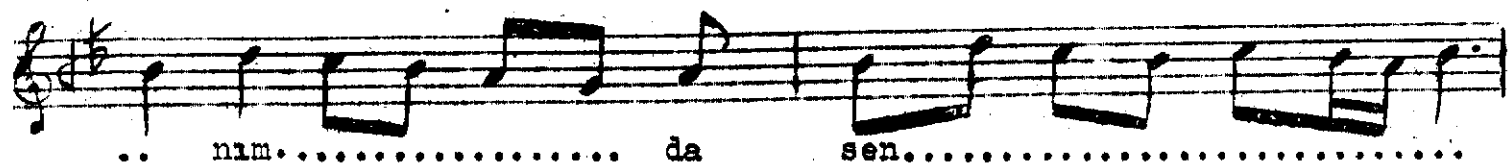
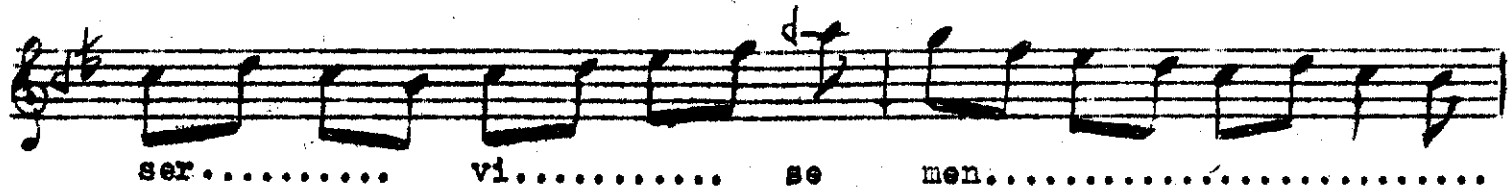
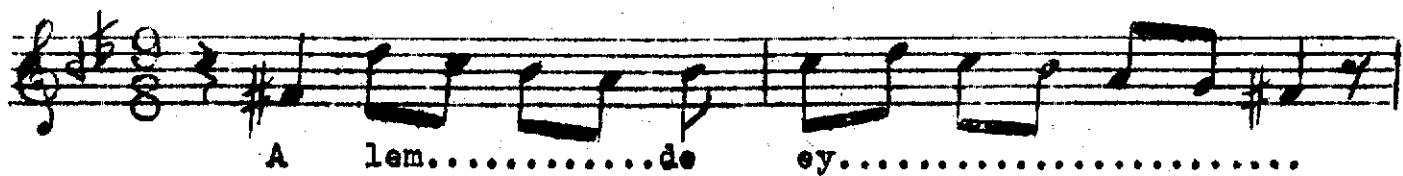
ALEMDE EY SERVİ

BESTENİGÂR ŞARKI

Ahmet Arifi Bey

(Cüneyd Kosal'dan)

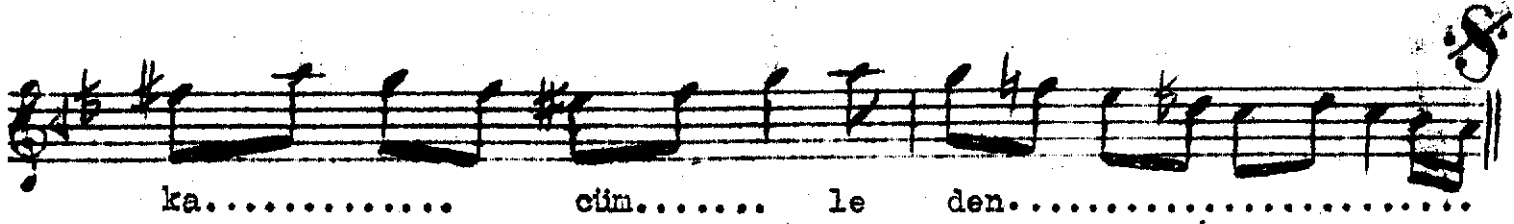
Aksak



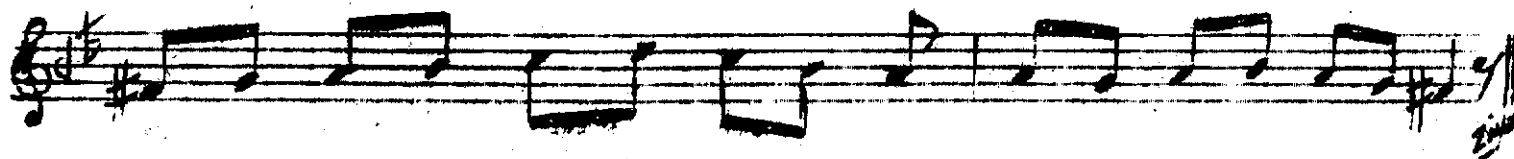
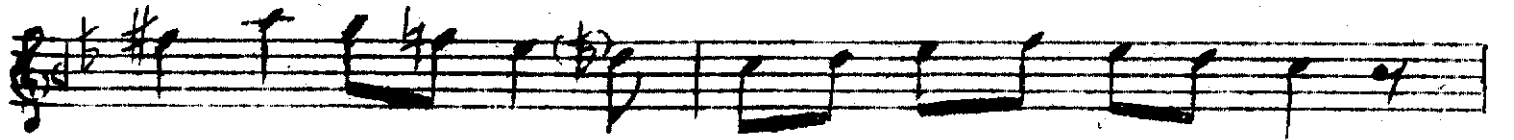
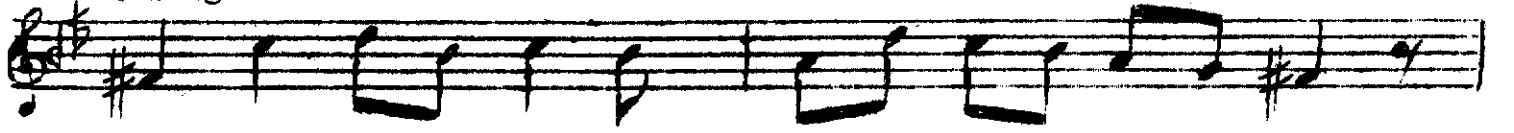
# ALEMDE EY SERVİ (2)

Bestenigâr Şarkı

Ahmet Arıff Bey



--Aranağmesi--



Alemde ey serv-i semen  
Cânım da cânânım da sen  
Kedim alâka cümleden  
Cânımda cânânım da sen.

Ketm eylemek aşkım muhâl  
Hâlîm bilir hep ehl-i hal  
Eyler isen sende sual  
Cânım da cânânım da sen

Amma ne çâre mutlaka  
Yok zerrece meylin bana  
Bilir iken yine şeha  
Cânım da cânânım da sen.